

YOUR **PREMIUM**  
**WEAR PARTS** SPECIALISTS







## ABOUT US

Mining Wear Parts (MWP), is an Australian owned and operated manufacturer and supplier of premium quality replacement parts and components for the mining, quarrying, and recycling industries.

Acquired by Mineral Resources Ltd (ASX:MIN) in 2020, MWP proudly have one of the largest stock holdings of parts and components to suit most makes and models of crushers currently in operation in the Australasian market.

In addition to this large product offering, MWP also stock premium parts for slurry pumps and G.E.T., and have an extensive range of cast blocks, billets, chocky blocks and bars to continue expanding on our vision to become the leading parts supplier globally.

Although we have the inventory and expertise of a multinational company, Mining Wear Parts remains agile and responsive enough to provide customers with the necessary time and attention. This ensures customised solutions, transparency, and support at every stage of our customers' relationship with us, from initial inquiry to repeat orders.

# CRUSHER LINERS

We offer a comprehensive range of crushing products and services tailored to meet the diverse needs of our customers. All our replacement components undergo stringent quality checks and adhere to manufacturing standards to ensure consistent performance. Designed to simplify installation without compromising on quality, our critical components are engineered to optimise equipment performance and minimise downtime.

Our engineering teams specialise in redesigning and enhancing component materials to meet life targets, especially in high-wear, abrasive, or high-impact applications. With warehouses in Perth and Brisbane, we ensure nationwide support with a large stock of critical components readily available. Additionally, all our products come with complete warranties.

Our premium manganese products are built and proven to optimise your crushers' performance. We can provide standard OEM profiles in our range of manganese grades or design cavities to suit your needs.

Our manganese products are subject to the highest quality checks and come fully warranted for peace of mind. Liners are painted specific colours and have cast identification numbers to indicate the materials used. With on-going customer support throughout the life of each component, we are a strong partner for customers in industrial settings.

With a huge range of parts to suit most makes and models, including but not limited to;

- **Terex**
- Jaques
- Pegson
- Cedarapids
- Finlay
- **Metso**
- Symons
- Lokomo
- Nordberg
- Sandvik
- Raptor
- Patriot
- Kue Ken
- Minyu
- Trio
- Goodwin Barsby
- Telsmith
- KPI-JCI
- Striker
- Hazemag
- Kodiak
- Kawasaki
- Allis Chalmers
- Vickers



## MANGANESE GRADES

Our wear-resistant manganese steels are designed to meet the demands of modern rock processing, providing incredible durability through work-hardening. The manganese percentage in our liners signifies the amount used in the casting, ensuring you receive exactly what you need.

Our premium replacement liners can be customised with various grades of manganese and enhanced with ceramic metallic inserts for unparalleled longevity. Trust our crusher specialists to recommend the ideal grade for your equipment, optimising crusher performance, output, and the shape and size of your materials for maximum efficiency.

### STANDARD 14%

Standard grade manganese steel provides a low-cost option for sites that have low wear rates or don't have to crush continuously.

### HIGH PERFORMANCE 18%

A high-performance grade of manganese delivers customers the perfect balance between cost and performance.

### ULTIMATE PERFORMANCE 22%

A high-grade 22% manganese provides the ultimate performance in high wear applications. Modified manganese material grades are available for customers that require extra toughness.

### CERAMIC METALLIC INSERTS

We provide ceramic metallic inserts for a range of high abrasive wear applications to provide customers with increased equipment availability, reduced operational costs and unexpected change outs. CM inserts provide an enhanced high wear zone to increase and maximise usable wear life. Our specialist teams can tailor products to suit customers' specifications.

## SAFETY LIFTING

Our premium manganese crusher liners are made to suit the Mangasafe™ range of cone and jaw crusher lifting tools. These lifting devices were developed as a safe alternative to traditional weld-on lifting lugs.

Mangasafe™ lifting products can be arranged with your order. We place a high priority on safety solutions to ensure customers and our people operate in safe environments.

## APPLICATIONS

- Jaw crusher wear parts
- Cone crusher wear parts
- Horizontal shaft impactor
- Blow bars and impactors
- Horizontal shaft impactor liners
- Hammermill hammers
- Hammermill breaker blocks
- Clinker breaker hammers



# COMPLETE CRUSHERS

We maintain a large stock of complete crushers in a continued effort to support our customers' operations. We know the costs associated with downtime and the frustrations around finding the right equipment at the last minute. With Mining Wear Parts holding stock of complete crushers we can quickly change out a customer's machine at low cost and minimal loss of production.

## OUR RANGE

We supply a range of complete replacement crushers to suit the most common makes and models in operation, including:

- HC100, HC200, HC300, HC400, HC500, HC600, HC800
- HC3, HC4, HC6
- M80, M96, M100, M106, M116, M120, M125, M140, M160

## RELIABLE AND DURABLE SOLUTION

Our complete crushing machines are built using high-quality castings and durable fixings, resulting in a superior replacement solution for customers.

Mining Wear Parts crushers are incredibly economical, offering longer service life, reducing the need for shuts and spare parts, resulting in a more cost-effective alternative.

All of our replacement crushers feature precise adjustment mechanisms that allows the customer to run precise closed-side settings. This helps to produce high volumes of well-shaped aggregates.

It also runs a well-proven tramp iron relief system incorporating tramp relief cylinders and accumulators to protect the machine. When the machine has tramped, it will reset back to the CSS to ensure product quality does not suffer.

## PREMIUM QUALITY

All Mining Wear Parts replacement parts and equipment come with complete warranties and technical support. Customers who purchase one of our stocked crushers will be provided with a customer care number and additional support to ensure the machine is installed and running as expected.



# WHY CHOOSE A MINING WEAR PARTS CRUSHER?

## LOW WEAR RATES

Our crushers are meticulously manufactured using high-strength alloy steels. This ensures long service life, permitting weld repairs and major component rebuilds, even after years of heavy-duty secondary crushing or tertiary applications.

## ROBUST FRAME

Our crushers rugged and heavy-duty design amplifies durability, resilient enough to navigate through erratic feeding conditions.

## HASSLE-FREE HYDRAULIC SETTING

With cutting-edge hydraulic features, our crushers offer push-button adjustment of the CSS and effortless installation and removal.

## CONTROL WITH REMOTE OPERATION

Our crushers are compatible with remote operation and can be flawlessly integrated with your plant's control system as needed.

## COMPACT DESIGN THAT FITS EVERYWHERE

Robust and reliable, our crushers easily retrofits into existing installations, making it a perfect replacement for underperforming crushers.

## PRIORITISE SAFETY

Your safety is paramount and our crushers comes equipped with extensive safety features, ensuring prolonged and safe operating time. Dual-acting cylinders can extend to lift the upper assembly, facilitating safe clearance of any objects stuck inside the chamber.

## GREATER CRUSHING POWER

Geared to handle varied feed types, our crushers, powered by a large motor and improved machine dynamics, delivers high crushing forces efficiently.

## LARGE RANGE OF WEAR LINERS AVAILABLE

We supply a large variety of compatible wear parts and liners to suit our entire range of replacement crushers. Whether it's a unique liner shape or profile, a blend of manganese alloys, or a custom-engineered design, we have the perfect liner suited to your specific application.



# CRUSHER PARTS

Our premium crusher parts are reengineered to address fitting issues, high wear rates, material inadequacies or redesigned to extend life and improve performance of our customers' equipment. We understand the frustrations with ill-fitting and inaccurately measured and designed equipment. We know our customers want a proven, tried and tested solution that allows them to reduce downtime and continue achieving their operational goals.

Our crusher parts are designed to exceed OEM standards, providing superior durability and performance. Thanks to our long-standing relationships with trusted foundry partners, we can ensure consistent quality and reliability in every part we supply. Additionally, all our products come fully warranted, giving you peace of mind.

To support customers nationally, we carry a large range of stock in both Perth and Brisbane warehouses. All our products come completely warranted.

## OUR RANGE OF CRUSHER PARTS INCLUDE:

- Heads
- Bowls
- Mainframes
- Countershafts
- Adjustment rings
- Top shells
- Main shafts
- Swing stocks
- Sockets
- Eccentrics
- Fly wheels
- Toggles and seats
- Spider bushes

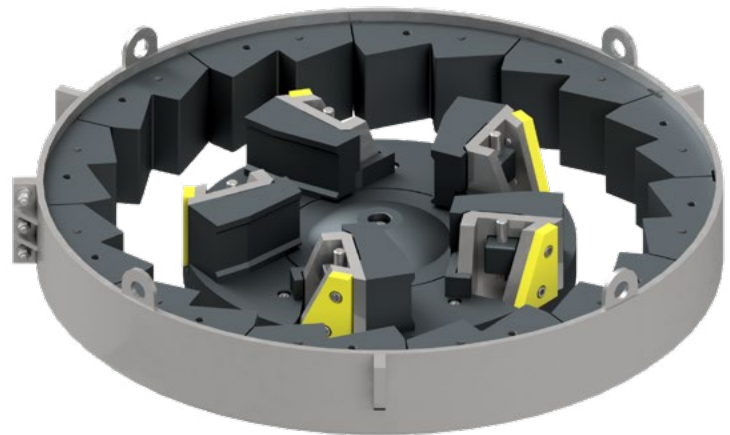


## IMPACT CRUSHER PARTS (VSI/HSI)

High impact and wear is common in impactors, particularly with the hard rock quarries in Australia. At these sites, machines need to perform optimally to achieve the final product size and shape. We regularly work with customers to reduce the costs of running these machines while helping deliver the product shape, size and volume required. The right settings, paired with our high-quality and reliable replacement parts, can help you achieve the outcomes required. If a tailored solution is required, we have impact crusher specialists available to assess the current output and final product of your equipment and provide a tailored solution to achieve your goals.

We have large stock holdings of replacement parts to suit the more common machines such as Hazemag, Terex-Canica, Striker and Metso, with additional in-house support to tailor solutions to suit older makes and models still in operation. Our regular stock includes premium replacement parts for your rotors including:

- Blow bars
- Breaker plates
- Liner plates
- Tip sets
- Distributor plates
- Wear plates
- Anvils and shoes
- Trial plates
- Feed tubes
- Eye rings

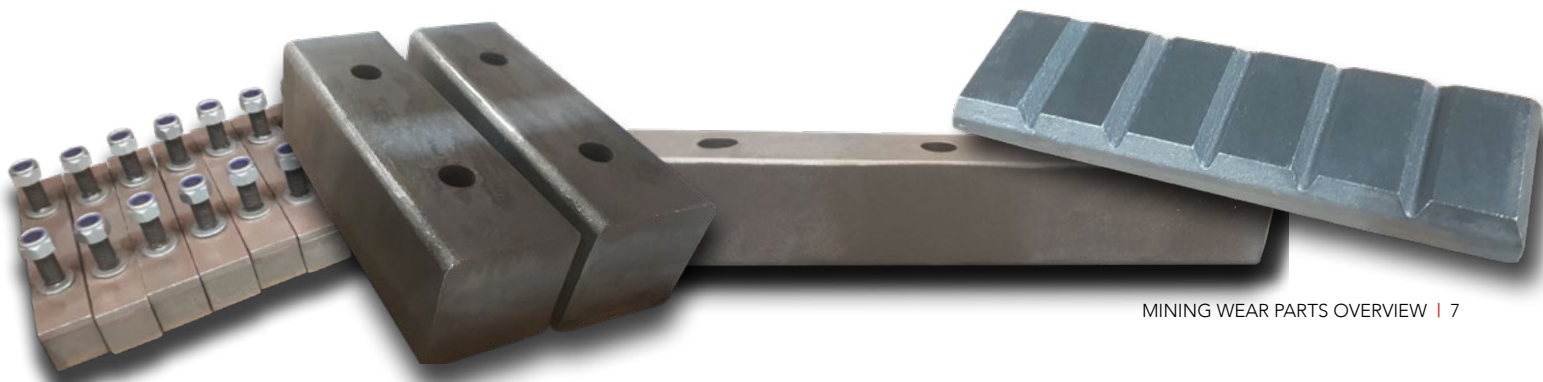


## BI-METAL WEAR BLOCKS AND BUTTONS

Our bi-metal wear blocks and buttons are a combination of high chrome white iron that is bonded to a mild steel backing plate. The white iron working surface has a hardness of 700 Brinell (nom.) that provides the ultimate abrasion resistance. The mild steel is easily weldable with limited preparation and acts as a support for the white iron, assisting with impact and abrasion in the most extreme applications.

Typical applications include but are not limited to; buckets (excavator, loader, dragline, face shovel), crusher spider arm guards, feed and discharge chutes, feeder grizzly bars, shredder and grinding mills, sugar cane knife edges, adaptor & attachment protection, and dredging equipment.

- Wear buttons/donuts
- Boomerangs
- Chocky bars
- Wafer strips
- Rock box liners
- Wear bars
- Wear plates
- Shredder/grinder tips
- Skid bars
- Knife edges
- Grizzly bars
- Micro-ledge
- Billets
- Liners

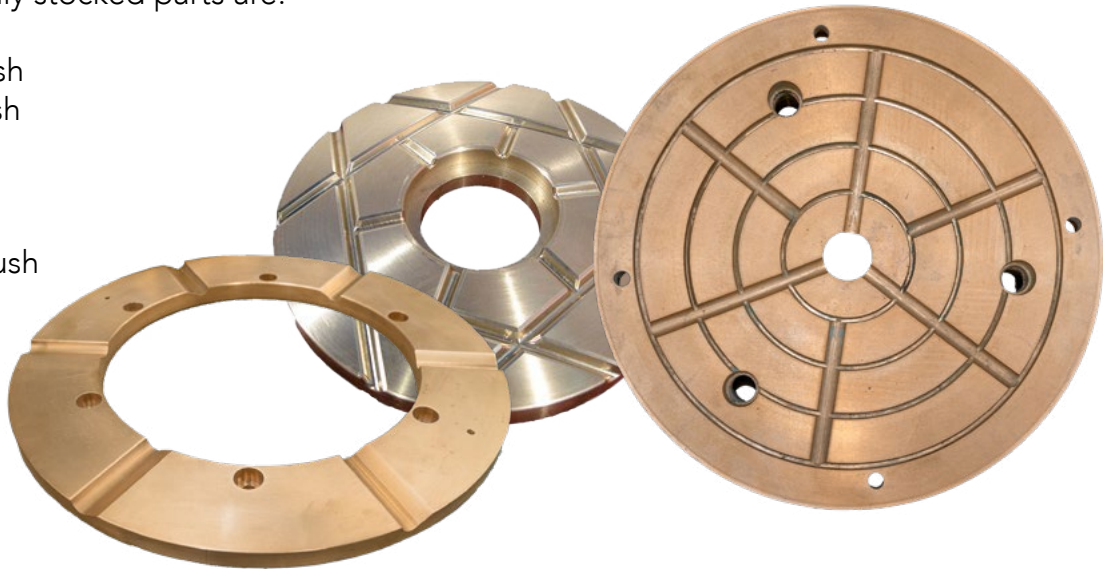


## BRONZE

We engineer our bronze components according to the exact specifications and requirements of our customers, utilising the highest quality grades of materials. We aim to ensure the performance and lifespan of the components match or surpass the expectations of our customers. During the manufacturing process, lead is evenly dispersed through the casting to ensure consistent lubricity which increases the life of our bronze castings.

With a continued investment in stocking crusher bronze for many of the leading brands, we're reducing downtime to support customers' operations. Some of the most commonly stocked parts are:

- Upper head bush
- Lower head bush
- Inner bush
- Outer bush
- Eccentric bush
- Countershaft bush
- Hydroset bush
- Step washer
- Socket liner
- Thrust bearing
- Thrust ring



## BACKING COMPOUND

We offer a full range of backing compounds to cover rapid set or delayed setting, temperature variation to locking bushes into position. We maintain a large stock holding to support customers globally.

- **MEGAPOXY STANDARD HICB**  
For everyday use. Rapid set time, minimal shrinkage, high impact crusher backing
- **MEGAPOXY ACCELERATOR**  
Reduces cure time for less down time of the crusher
- **MEGAPOXY EASYPUR**  
Low viscosity designed to fill the cavity faster
- **MEGAPOXY 57**  
Designed for hot climates. With low viscosity it will fill the cavity faster so it is full before it begins to harden
- **BUSHLOCK**  
Used to lock bushes into position





# GROUND ENGAGING TOOLS

At Mining Wear Parts, we understand that the key to maximising your earthmoving equipment's efficiency and productivity lies in selecting the right Ground Engaging Tools (G.E.T.). No matter how tough the conditions are in the environment you're operating in, our G.E.T. solutions are designed to protect your equipment, reduce costs, and enhance performance.

## SUPERIOR QUALITY

Our range of G.E.T. products, including blades, edges, shrouds, and grouser bars, are crafted from premium quality steel.

This ensures exceptional durability, easier replacements, and improved material penetration, making sure your equipment performs at its best from the start.

We cater to the most common machines in operation and can customise G.E.T. to meet the specific demands of your operation.

## LOWER COSTS

Our G.E.T. solutions are designed to extend the working life of your buckets, blades, and entire machines, thereby reducing maintenance costs and increasing productivity. By optimising machine performance across a wide range of applications and site conditions, we help you achieve your production goals efficiently and economically.

## EXPERT SUPPORT

Choosing the right G.E.T can significantly impact your operational costs and machine performance. Conversely, choosing the wrong tools can create issues that cost you time and money. Our expert team works closely with you to understand your specific digging conditions, maintenance requirements, and wear rates. We provide tailored recommendations and support to ensure you get the most out of your G.E.T. investment.



## EXPANSIVE PRODUCT LINE

We stock a huge range of G.E.T. products for graders, dozers, and loaders. Our selection of replacement parts, combined with our industry expertise, guarantees that we can provide the perfect fit for your earthmoving equipment needs.

Our range includes:

- Cutting Edges
- Shrouds
- Heel Blocks
- Corner Guards
- End Bits
- Grouser Bars
- Heel Plate
- Side Bar Protectors
- Half Arrow Segments
- Rippers
- Wear Plate
- Shanks
- Grader Blades
- Bucket Teeth
- Edge Bases
- Scarifier Tips



# PUMPS AND PUMP PARTS

Mining Wear Parts specialises in delivering high-performance pumps and components designed to withstand the rigorous demands of the mining industry. Our range includes various types of pumps constructed from advanced materials such as urethane, rubber, high chrome white iron, and ceramics, providing solutions tailored to the most challenging environments.

## OUR RANGE OF PUMPS

### METAL PUMPS

From 1.2" x 1" to 18" x 16", our metal pumps are built for maximum durability and efficiency in transferring abrasive slurries and fluids within mining operations.

### RUBBER PUMPS

Designed to handle corrosive and abrasive slurries, our rubber pumps range from 1.5" x 1" to 20" x 18", offering robust solutions suitable for various applications.

### GRAVEL PUMPS

For handling large particles, gravel pumps ranging from 6" x 4" to 36" x 36" are engineered to deliver exceptional performance and reliability in challenging conditions.

### DREDGE PUMPS

Our dredge pumps, available in sizes from 8" to 40", are optimised for moving high-density slurry, ideal for dredging operations.

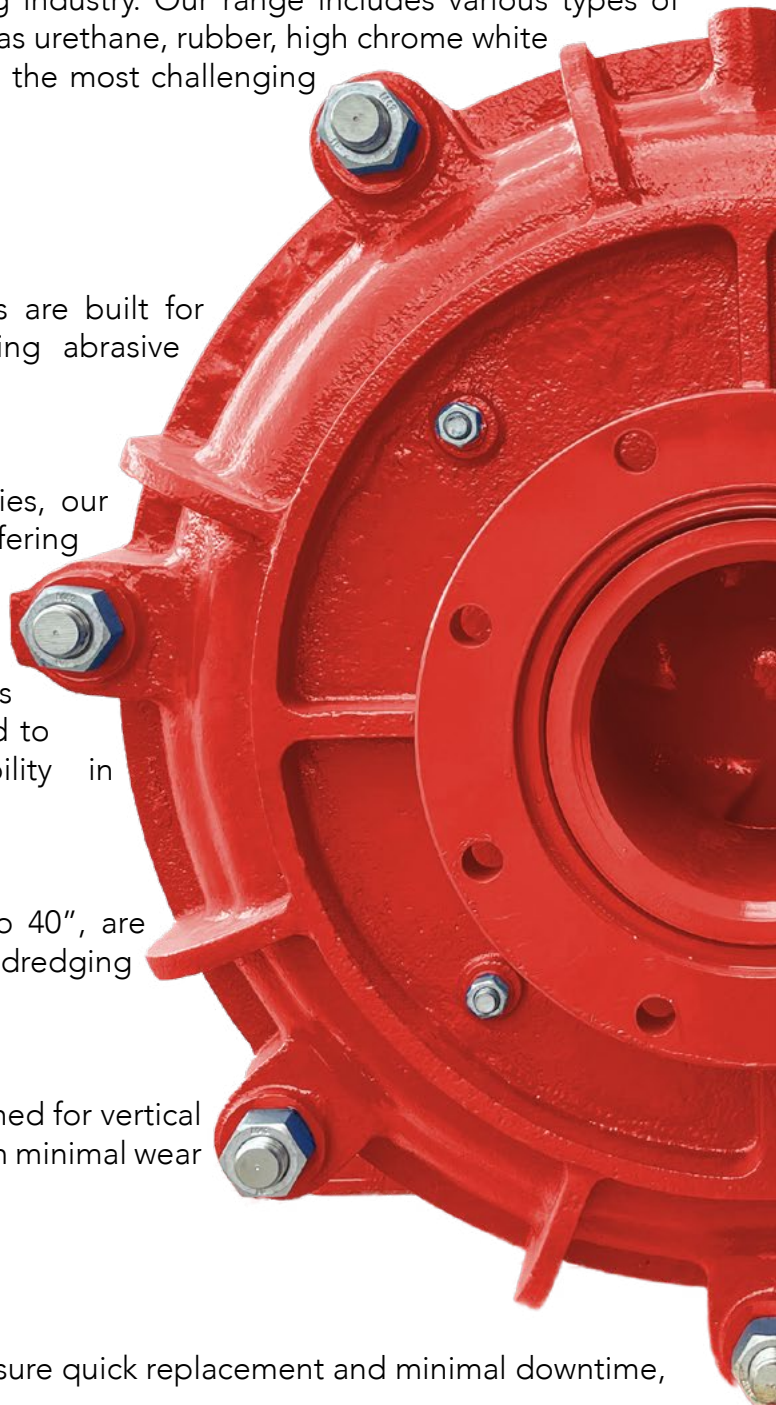
### VERTICAL SLURRY PUMPS

Available from 1.5" to 12", these pumps are designed for vertical applications requiring efficient transfer of slurry with minimal wear and tear.

## REPLACEMENT PUMP PARTS

We stock an extensive range of components to ensure quick replacement and minimal downtime, including:

- Pump casings
- Pump covers
- Impellers
- Backing plates
- Shafts and shaft seals
- Motor adapters
- Bearings
- Bearing frames



## EXPERT SERVICE AND CUSTOMISATION

### Tailored Recommendations

Our experienced team evaluates your specific requirements and the type of slurry or fluid to be processed, ensuring the selection of the most suitable wear material and pump sizes for optimal performance.

### Customer Support

With a commitment to 24/7 support, our customer service team is ready to assist with fast delivery of replacement parts and expert advice to solve any issues quickly.

## REDUCING OPERATING COSTS

### Optimised Performance

Our premium pumps and parts leverage the latest advancements in material technology to maximise equipment life, minimise unplanned downtime, and enhance productivity.

### Efficient Operations

By selecting the right pumps and components, Mining Wear Parts helps you reduce total ownership costs, thereby optimising your operating budget and boosting your bottom line.

## COMMITMENT TO QUALITY

### Reliability and Longevity

Mining Wear Parts is dedicated to providing products that deliver consistent performance and reliability, ensuring longevity in the harshest mining environments.

### Unyielding Quality

Our unwavering commitment to quality guarantees that our customers benefit from top-performing pumps and parts, capable of handling the tough demands of mining operations.



# ENGINEERING

Our engineering team leverages state-of-the-art technology and extensive skills to deliver innovative solutions that cater to the specific needs of our customers. Our expertise spans areas such as scanning, reverse engineering, life prediction, and liner enhancement, all aimed at achieving customer goals, including prolonged lifespan, improved throughput, and optimised product shape. By continuously working on cutting-edge designs and materials, we strive to maximise the value and performance of our premium parts.

We adhere to the Six Sigma methodology in design engineering, ensuring a consistent and practical approach to optimising the lifespan and usability of our replacement parts. Our commitment to process improvement and thorough quality inspections helps customers realise cost-effective solutions through intelligent design.

## QUALITY CONTROL

We emphasise built-in quality over mere product testing, employing the Six Sigma methodology to ensure consistent quality throughout our processes. Our embedded quality control measures produce reliable and precise final products, and our suppliers are held to the same standards by our dedicated engineers. We actively incorporate customer feedback for continuous quality enhancement.

## ENGINEERING FOR DESIGN

Our engineering teams utilise data from 3D scanning and predictive analysis software to create custom solutions that ensure optimal design from the early stages of development. By prioritising client needs, we aim to deliver outcomes such as reduced power consumption, increased throughput, optimal product shape, minimised material recirculation, and decreased wear on associated assets.



# LINER DEVELOPMENT PROGRAM

Our Liner Development Program, a key service offering, is designed to address diverse challenges in crushing operations. The program focuses on extending the lifespan of wear components, optimising operational parameters, and ensuring a perfect liner fit. Recognising the uniqueness of each application and machine, we tailor our approach to meet specific site requirements.

## CRUSHER LINER OPTIMISATION

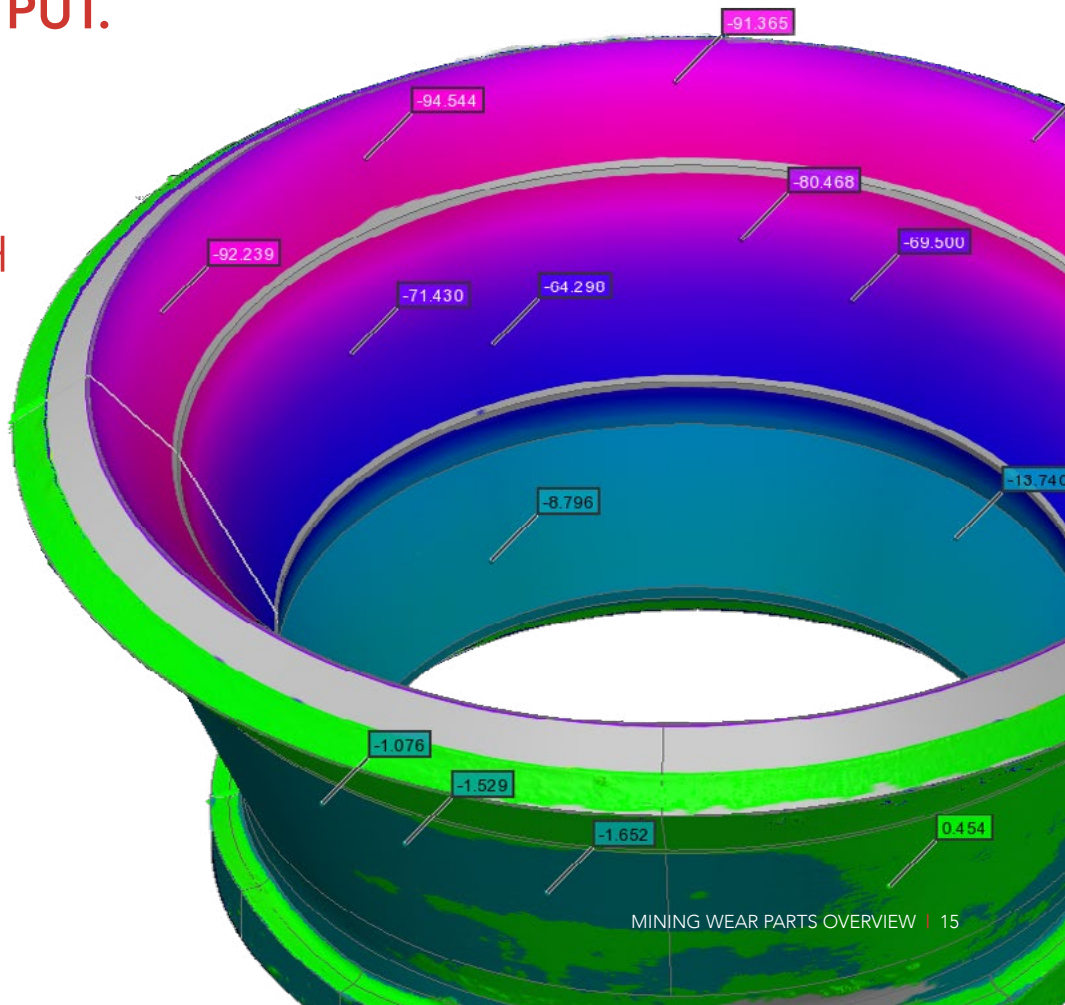
As part of our Liner Development Program, we offer comprehensive analysis of worn profiles to understand wear patterns, material suitability, and overall lifespan. This detailed insight enables us to develop improved crusher liners, minimising guesswork and trial periods, and delivering the desired savings, longevity, and material output more efficiently.

Through close collaboration with customers, we tackle prevalent industry challenges such as premature failure, excessive wear, and accuracy issues that hinder throughput and product quality. By optimising materials, measurements, and casting techniques from the beginning, we prevent costly disruptions. This holistic approach to liner development ensures consistent performance, enhancing overall operational efficiency and profitability.

Unlock your crushing potential with our expertly designed engineering solutions, committed to quality control, wear part optimisation, and comprehensive liner development services.

**GREATER SAVINGS.  
LONGER LIFESPAN.  
INCREASED OUTPUT.**

UNLOCK YOUR  
CRUSHING  
POTENTIAL WITH  
MINING WEAR  
PARTS LINER  
DEVELOPMENT  
PROGRAM



# WESTERN AUSTRALIA

Mining Wear Parts operates from a 13,000m<sup>2</sup> facility in Henderson, which includes a 3,500m<sup>2</sup> warehouse and workshop dedicated to supplying manganese crusher liners and spare parts. The facility is equipped with two 15-tonne and two 5-tonne overhead cranes. These cranes enable us to perform repair work, stripping, blasting, non-destructive testing (NDT), and assessment and quoting for partial or complete crusher or component repairs as requested by our clients.



# LOCATION AND PREMISES

Mining Wear Parts operates modern facilities across Australia with easy access to air, road, rail, and port transport.

## QUEENSLAND

In Queensland, Mining Wear Parts operates out of a 2,000m<sup>2</sup> facility in Yatala. This purpose-built site allows Mining Wear Parts to supply manganese crusher liners and spare parts. The Yatala facility serves as the main warehouse for the East Coast of Australia, storing an extensive range of manganese wear liners and spare parts suitable for nearly all crushers. Additionally, a dedicated rotor rebuild facility restores VSI rotors to OEM specifications, and a selection of service exchange units are available for quick turnaround.



[MININGWEARPARTS.COM.AU](http://MININGWEARPARTS.COM.AU)  
[info@miningwearparts.com.au](mailto:info@miningwearparts.com.au) | 1300 898 159