

HIGH-QUALITY AFTERMARKET
REPLACEMENT **WEAR PARTS**
FROM FEED THROUGH TO STOCKPILE.





V280921

An aerial, high-angle photograph of a mining operation. A prominent feature is a long, white, lattice-structured conveyor system that runs diagonally across the frame. The ground is a mix of dark earth and lighter-colored material, possibly crushed rock or ore. The overall scene is industrial and rugged.

ABOUT US

Mining Wear Parts (MWP), is an Australian owned and operated manufacturer and supplier of high-quality aftermarket parts and components for the mining, quarrying, and recycling industries. Recently acquired by Mineral Resources Ltd (ASX:MIN), MWP proudly have one of the largest stock holdings of parts and components to suit most makes and models of crushers currently in operation in the Australian market. In addition to this large product offering, MWP also stock aftermarket parts for slurry pumps and have an increasing range of cast blocks, billets, chocky blocks and bars to continue expanding on our vision to become a leading aftermarket parts supplier.

While inventory and experience is that of a multi-national company, MWP remain nimble and able to give customers the time they require to ensure tailored solutions, transparency, and support throughout their journey, from enquiry through to reorder.



ENGINEERING

MWP engineering teams have the latest equipment and technical ability to scan, reverse engineer, predict life, and propose liner improvements to support customers' desired outcomes, whether extended life, improved throughput, or product shape. Working with customer data, partner foundries, and our quality team to ensure the final product meets or exceeds expectations.

Our engineering is continuously working on innovative designs and materials to improve products to maximize our aftermarket parts' value.

We follow the Six Sigma methodology in design engineering to provide a consistent and practical approach to maximize the life and usability of our aftermarket parts. We continue to improve our processes to help customers realise cost-effective solutions that extend life through clever design and thorough quality inspections.

QUALITY CONTROL

We believe in built-in quality rather than only product quality, and we employ the Six Sigma methodology to achieve it. The quality control is embedded in our process resulting in a reliable and accurate final product.

Our suppliers also follow the same philosophy that is continuously monitored by our quality engineers. We believe in capturing 'Customer Voice' for continual improvement in quality.

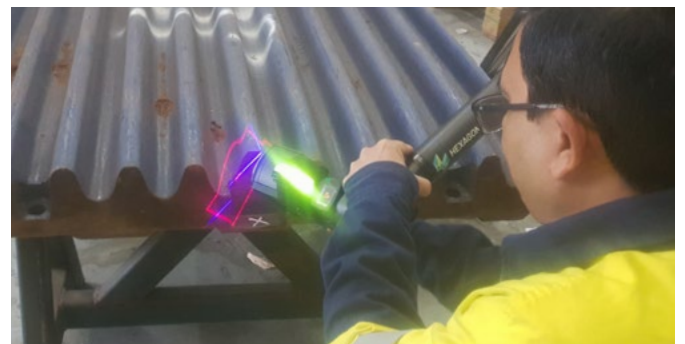
WEAR PART OPTIMISATION

We work with customers to understand and improve known industry issues such as premature failure, too much wear, or inaccurate measurements that aren't maximizing throughput or the product shape as desired. Whether it be improving materials, measurements or casting techniques at the beginning of life, we can make improvements to prevent known issues that result in these unwanted and costly interruptions.

CRUSHER LINER OPTIMISATION

Our liner optimisation offerings are available for all customers. We work with your worn profiles to understand the wear profile, material suitability, and general life capabilities. This information provides an understanding of the liner and subsequent crushers' overall performance.

This intel helps us to further develop your crusher liners to significantly reduce the guess and time to trial products, meaning a quicker arrival at savings, life, or material output that's desired by the client.





MANGANESE GRADES

Manganese is used in crusher wear parts as it improves life as it work hardens. When selecting manganese liners, the liner percentage indicates the amount of manganese used in the casting. Our quality cast aftermarket liners come in 14%, 18% and 22% manganese.

Our customers rely on our crusher specialists to suggest the right parts for their equipment to help optimise crusher performance, output or material shape size.

STANDARD 14%

Standard grade manganese steel provides a low-cost option for sites that have low wear rates or don't have to crush continuously.

HIGH PERFORMANCE 18%

A High-performance grade of manganese delivers customers the perfect balance between cost and performance.

ULTIMATE PERFORMANCE 22%

A high-grade 22% manganese giving the ultimate performance in high wear applications. Modified manganese material grades are available for customers that require extra toughness.

SAFETY LIFTING

Our aftermarket manganese crusher liners are made to suit the Mangasafe™ range of cone and jaw crusher lifting tools. These lifting devices were developed as a safe alternative to traditional weld on lifting lugs.

Mangasafe™ lifting products can be arranged with your order. We place a high priority on safety solutions to ensure customers and our people operate in safe environments.

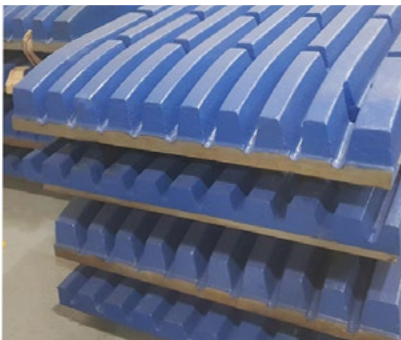
MANGANESE

Our aftermarket manganese products are built and proven to optimise your crushers performance. We can provide standard OEM profiles in our range of manganese grades or design cavities to suit your needs.

Our manganese products are subject to the highest quality checks and come fully warranted for peace of mind. Liners are painted specific colours and have cast identification numbers to indicate the materials used. With on-going customer support throughout the life of each component, we are a strong partner for customers in industrial settings.

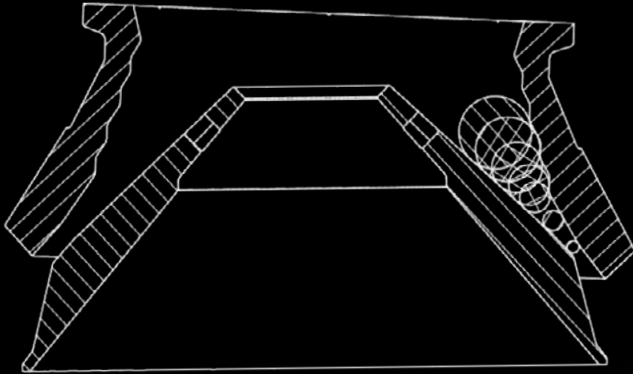
With a huge range of parts to suit most makes and models, such as but not limited to;

- Terex
- Jaques
- Pegson
- Cedarapids
- Finlay
- Metso
- Sandvik
- Raptor
- Patriot
- Kue Ken
- Minyu
- Trio
- Symons
- Nordberg
- Lokomo
- Goodwin
- Telsmith
- KPI-JCI
- Striker
- Hazemag
- Kodiak
- Kawasaki
- Allis Chalmers
- Vickers

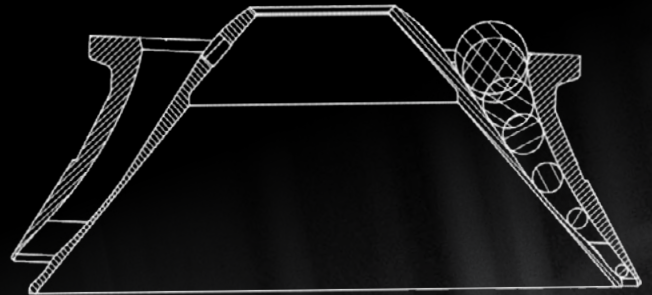


LINER OPTIMISATION

Every application and machine is different so we work focused on each profile to get the best from it. Using 3D Scanning equipment, custom software, worn liners, new liners and in discussion with the operator we can quickly innovate a liner or set that can improve the life 20-200%, that will bring overall savings and efficiencies.



Bowl Mantle
Feed Pattern



Bowl Mantle
Worn Feed Pattern



BACKING COMPOUND

We offer a full range of backing compounds to cover rapid set or delayed setting, temperature variation to locking bushes into position. We maintain a large stock holding to support customers, globally.

- **MEGAPOXY STANDARD HICB**
For everyday use. Rapid set time, minimal shrinkage, high impact crusher backing
- **MEGAPOXY ACCELERATOR**
Reduces cure time for less down time of the crusher
- **MEGAPOXY EASYPOUR**
Low viscosity designed to fill the cavity faster
- **MEGAPOXY 57**
Designed for hot climates. With low viscosity it will fill the cavity faster so it is full before it begins to harden
- **BUSHLOCK**
Used to lock bushes into position



CRITICAL CRUSHER PARTS

All of our aftermarket components adhere to strict quality checks and manufacturing standards to ensure consistency to continue supporting customers by providing reliable aftermarket parts that optimize performance.

Our range of critical components are designed to simplify installation, without compromising on the quality or fit, to get equipment up and running quicker. Our Engineering teams can redesign and improve component materials to ensure life targets are achieved in high wearing, abrasive or high impact applications.

To support customers nationally, we carry a large range of stock in both Perth and Brisbane warehouses. All of our products some completely warranted.

- Heads
- Bowls
- Mainframes
- Countershafts
- Adjustment rings
- Top shells
- Main shafts
- Swing stocks
- Socket
- Eccentric
- Fly wheel
- Toggles and seats
- Spider bush

BRONZE

Our bronze components are engineered to customers specifications and requirements, using the highest quality grades of material to ensure life and performance meets or exceeds customers expectations. During the manufacturing process, lead is evenly dispersed through the casting to ensure consistent lubricity which increases the life of our bronze castings.

With a continued investment in stocking crusher bronze for many of the leading brands, we're reducing downtime to support customers operations.

- Inner bush
- Outer bush
- Eccentric bush
- Countershaft bush
- Step washer
- Hydroset bush
- Socket liner



TRANSPORT CARE

All bushes are professionally packaged in strong timber crates to protect each part. Bushes that might suffer from transport damage are all fitted with shock and tilting sensors to ensure the part arrives at your site in perfect condition.





GRAVEL AND SLURRY PUMPS AND PARTS

Our high-performance aftermarket pumps and parts use the latest wear materials such as urethane, rubber, high chrome white iron, and ceramics. These materials are used to deliver solutions that are suited to the harshest pumping environments. Depending on the fluids that pass through the pump, Mining Wear Parts can supply the following sizes and materials:

- Metal Pumps from 1.2" x 1" to 18" x 16"
- Rubber from 1.5" x 1" to 20" x 18"
- Gravel Pumps from 6" x 4" to 36" x 36"
- Dredge Pumps from 8" to 40"
- Vertical Slurry Pumps 1.5" to 12"

With a comprehensive range of high-quality, heavy-duty aftermarket slurry pumps and parts, Mining Wear Parts hold stock to suit all major makes and models in the market.

Our knowledge is integrated with our unyielding commitment to quality and reliability, giving our customers consistent pump performance, reducing operating costs by maximising production.



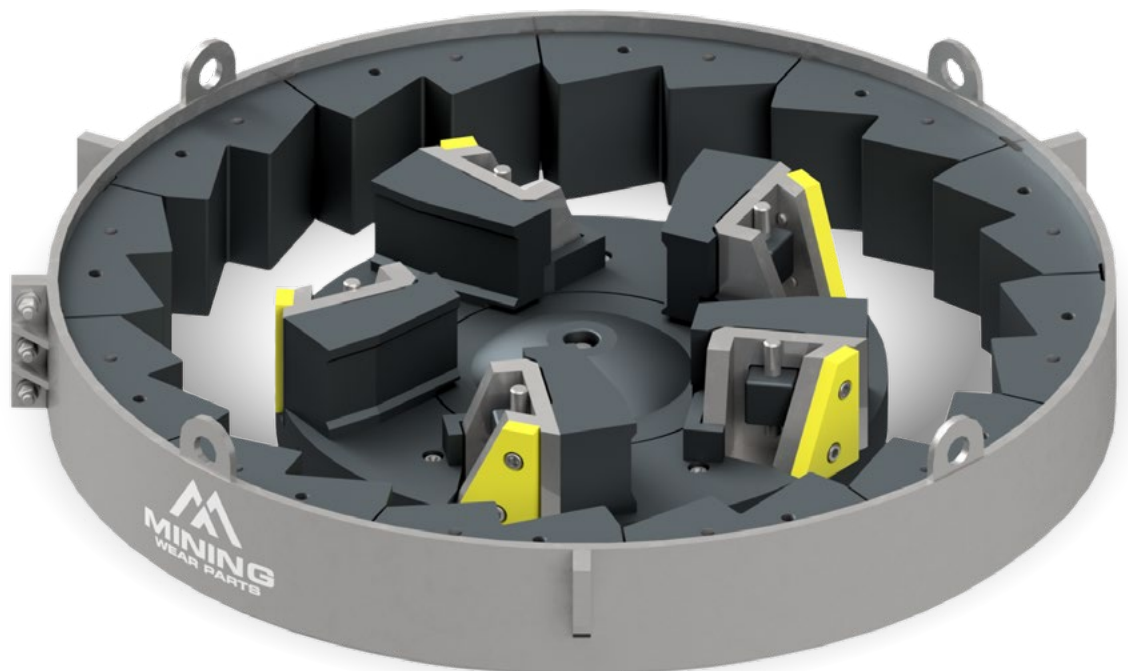


IMPACT CRUSHER PARTS (VSI/HSI)

High Impact and high wear is common in impactors, particularly with the hard rock quarries in Australia. These machines need to perform optimally to achieve the final product size and shape. We regularly work with customers to reduce the costs of running these machines while helping deliver product shape, size and volume required. The right settings paired with our high-quality and reliable aftermarket parts can help you achieve the outcomes required. If a tailored solution is required, we have impact crusher specialists available to assess your current equipment's output and final product and provide a tailored solution to achieve your goals.

We have large stock holdings of aftermarket parts to suit the more common machines such as Hazemag, Terex-Canica, Striker and Metso, with additional in-house support to tailor solutions to suit older makes and models, still in operation. Our regular stock includes high-quality aftermarket parts for your rotors such as high-wearing tips and bars and complete aftermarket rotor replacements.

- Blow bar
- Breaker plates
- Liner plates
- Tip sets
- Distributor plates
- Wear plates
- Anvils and shoes
- Trial plate
- Feed tube
- Eye rings



BI-METAL WEAR BLOCKS AND BUTTONS

Our bi-metal wear blocks and buttons are a combination of high chrome white iron that is bonded to a mild steel backing plate. The white iron working surface has a hardness of 700 Brinell (nom.) that provides the ultimate abrasion resistance. The mild steel is easily weldable with limited preparation and acts as a support for the white iron, assisting with impact and abrasion in the most extreme applications.

Our wear range provide a simple and cost effective solution to protect against wear in both mobile and fixed assets.

Typical applications include but are not limited to; buckets (excavator, loader, dragline, face shovel), crusher spider arm guards, feed and discharge chutes, feeder grizzly bars, shredder and grinding mills, sugar cane knife edges, adaptor & attachment protection and dredging equipment.

- Wear buttons/donuts
- Boomerangs
- Chocky bars
- Wafer strips
- Rock box liners
- Wear bars
- Wear plates
- Shredder/grinder tips
- Skid bars
- Knife edges
- Grizzly bars
- Micro-ledge
- Billets
- Liners



CERAMIC METALLIC (CM) INSERTS

We provide CM inserts for a range of high abrasive wear applications to provide customers increased equipment availability reduced operational costs and reducing unexpected change outs. CM inserts provide an enhanced high wear zone to increase and maximise usable wear life. Our specialist teams can tailor products to suit customers specifications. Our CM inserts are available in 20mm, 40mm, 60mm, and 80mm depths.

APPLICATIONS

- Jaw crusher wear parts
- Cone crusher wear parts
- Horizontal shaft impactor
- Blow bars and impactors
- Horizontal shaft impactor liners
- Hammermill hammers
- Hammermill breaker blocks
- Clinker breaker hammers







MININGWEARPARTS.COM.AU

info@miningwearparts.com.au | 1300 898 159